



# CHENNAI METRO RAIL LIMITED NEWS LETTER

April 2017  
ISSUE 1 VOL - 4



CHAIRMAN

Thiru Rajiv Gauba, I.A.S.,

SECRETARY

MINISTRY OF URBAN DEVELOPMENT  
GOVT. OF INDIA

MANAGING DIRECTOR

Thiru. Pankaj Kumar Bansal, I.A.S.  
CHENNAI METRO RAIL LIMITED

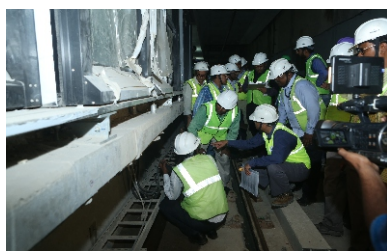
IN THIS ISSUE

- \* CMRS inspection from Thirumangalam to Nehru Park
- \* Underground Sections & Tunneling Work Progress
- \* Gallery
- \* Rolling Stock work progress

## CMRS Inspection from Thirumangalam to Nehru Park

The Commissioner of Metro Rail Safety visited the Chennai Metro Rail project for the underground line extending the Green Line from Koyambedu station to Nehru Park. The five-member CMRS team led by Commissioner of Metro Rail Safety (CMRS) namely;

1. Shri K.A. Manoharan, CRS/S. Circle, Bangalore.
2. Shri E. Srinivas Dy. CRS(S&T)/ Bangalore
3. Shri G. P. Garg Dy. CRS(ET)/Mumbai
4. Shri Uttam Prakash XEN/Flood, S.Rly
5. Shri Athani, Sr.PA to CMRS



The CMRS team inspected the 7.633 km long stretch from Koyambedu to Nehru Park covering the seven underground stations viz Thirumangalam, Anna Nagar Tower, Anna Nagar East, Shenoy Nagar, Pachaiyappa's College, Kilpauk and Nehru Park and the associated tunnels between them.

The inspection commenced from Koyambedu towards Shenoy Nagar on the first day and from Nehru Park to Koyambedu on the second day covering the safety and passenger facilities in the stations and tunnels. Detailed inspection of Tracks, Tunnel fit-outs, Over Head Equipment (OHE), Signaling, Telecom, Tunnel Ventilation system (TVS), Mechanical Electrical and



Plumbing (MEP), Ventilation and Air conditioning (VAC), Platform Screen Doors (PSD), and Station facilities including passenger amenities, signage's etc. were covered during the inspection. Dynamic tests and trials of Train from safety considerations was also a part of the inspection. The CMRS also inspected the functioning of systems during the 2-day visit in detail.



## Underground Sections & Tunneling Work Progress as on 30.04.2017

Package	TBM	From	To	Tunnelling length in mtr	Completed in mtr	Percentage completed
UAA 01	TBM 1	Washermenpet Metro	Egmore Metro	4445	4445	100
	TBM 2	Washermenpet Metro	Egmore Metro	4445	4445	100
	TBM 3	May Day Park	Central Metro	2080	2080	100
UAA 02	TBM 1	May Day Park	AG-DMS	3616	2686	74.3
	TBM 2	May Day Park	AG-DMS	3616	2443	67.56
UAA 03		Saidapet Metro	AG-DMS	5736	5736	100
UAA 04		Egmore Metro	Shenoy Nagar	6776	6776	100
UAA 05		Shenoy Nagar	Thirumangalam	5594	5594	100
UAA 08	TBM 1	Washermenpet	Korukkupet	2000	294	14.7
	TBM 2	Washermanpet	Korrukupet	2000	77	3.85
<b>Total</b>				<b>40308</b>	<b>34576</b>	<b>85.78</b>

### Gallery



Central Metro Station



Egmore Station



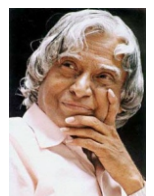
High Court Station



Washermanpet Station

*"Don't take rest after your first victory because if you fail in second, more lips are waiting to say that your first victory was just luck."*

A.P.J Abdul Kalam





## Rolling Stock Progress

The total order quantity for design, manufacture, supply, testing and commissioning of trains from Alstom Transport is 42. Out of which 9 trains are imported from Alstom, Brazil and remaining 33 trains are being delivered from Alstom Factory set up at Sri City, Andhra Pradesh as a measure of promoting indigenisation and technology transfer of Metro train manufacture.

### Trains delivered to depot:

A total of 39 trains including the 9 trains of import category, have been delivered to CMRL Koyambedu Depot.

**Trains commissioned and conditionally accepted by CMRL.** The total accepted 24 trains are put under revenue service of Stage-1,1A sections and operation trial runs of Stage 2A of CMRL. Maintenance activities on these 24 trains are carried out by CMRL Rolling Stock Maintenance Team and the warranty obligation is done by the contractor.

### Trains under testing at CMRL facility

All other trains delivered to CMRL are under various stages of testing and commissioning in CMRL depot and mainline.

### Maintenance of CMRL trains:

- \* Preventive maintenance activities on these 24 trains are carried out by CMRL Rolling Stock Maintenance Team and corrective maintenance is done by the contractor.
- \* Preventive maintenance activities include 72 hrs inspection, monthly maintenance, quarterly maintenance, half yearly maintenance and annual maintenance.
- \* RE-railing equipment mock-up was successfully completed on 22<sup>nd</sup> April 2017. During the mock up, functioning and working of Re-railing equipment such as Power packs, Hydraulic Jacks, Spreader, cutter, Airbags, Rescue Trolley etc. are checked for proper functioning.

### Trains under manufacturing at Sricity:

- \* Trains 40 to 42 are under various stages of production and testing, as per the schedule, at Alstom factory, Sri City.

### Employee of the Month

- \* Mr. G Vishnu Perumal, Technician/Mechanical has been nominated as the "Employee of the Month" of Apr 2017, for valuable contributions mentioned below.
- \* Actively participated every day in the witnessing and closure of open items of TS # 01 for takeover by CMRL.
- \* Completed the documentation of the entire ECP witnessed documents (from 2015 to up to date) in to a database for easy reference.
- \* Actively participated in the Stage 2A train testing for Public Address and Communication Information System.
- \* Actively participated in the ECP witnessing for revenue and non-revenue trains in depot

#### Editor

Tmt. Tamil Mozhi Amuthu, PRO

#### Sub-Editor

Selvi. Shruti Shambavi. R, AM (PR)

#### Please address all correspondence to:

The Editor,  
Chennai Metro Rail News Letter,  
Chennai Metro Rail Limited,  
"Administration Building",  
CMRL Depot, Poonamallee High Road,  
Koyambedu, Chennai - 600 107.

Published by:  
Chennai Metro Rail Limited